



Intra-urban variability of long-term exposure to PM_{2.5} and NO₂ in five cities in Colombia

Laura A. Rodriguez-Villamizar¹ · Yurley Rojas² · Sara Grisales³ · Sonia C. Mangones⁴ · Jhon J. Cáceres² · Dayana M. Agudelo-Castañeda⁵ · Víctor Herrera^{1,6} · Diana Marín⁷ · Juan G. Piñeros Jiménez³ · Luis C. Belalcázar-Ceron⁴ · Oscar Alberto Rojas-Sánchez⁸ · Jonathan Ochoa Villegas⁹ · Leandro López¹ · Oscar Mauricio Rojas¹⁰ · María C. Vicini¹¹ · Wilson Salas¹² · Ana Zuleima Orrego¹³ · Margarita Castillo¹⁴ · Hugo Sáenz¹⁵ · Luis Álvaro Hernández¹⁵ · Scott Weichenthal¹⁶ · Jill Baumgartner¹⁶ · Néstor Y. Rojas⁴

Received: 31 May 2023 / Accepted: 26 November 2023
© The Author(s) 2023

Abstract

Rapidly urbanizing cities in Latin America experience high levels of air pollution which are known risk factors for population health. However, the estimates of long-term exposure to air pollution are scarce in the region. We developed intraurban land use regression (LUR) models to map long-term exposure to fine particulate matter (PM_{2.5}) and nitrogen dioxide (NO₂) in the five largest cities in Colombia. We conducted air pollution measurement campaigns using gravimetric PM_{2.5} and passive NO₂ sensors for 2 weeks during both the dry and rainy seasons in 2021 in the cities of Barranquilla, Bucaramanga, Bogotá, Cali, and Medellín, and combined these data with geospatial and meteorological variables. Annual models were developed using multivariable spatial regression models. The city annual PM_{2.5} mean concentrations measured ranged between 12.32 and 15.99 µg/m³ while NO₂ concentrations ranged between 24.92 and 49.15 µg/m³. The PM_{2.5} annual models explained 82% of the variance (R^2) in Medellín, 77% in Bucaramanga, 73% in Barranquilla, 70% in Cali, and 44% in Bogotá. The NO₂ models explained 65% of the variance in Bucaramanga, 57% in Medellín, 44% in Cali, 40% in Bogotá, and 30% in Barranquilla. Most of the predictor variables included in the models were a combination of specific land use characteristics and roadway variables. Cross-validation suggests that PM_{2.5} outperformed NO₂ models. The developed models can be used as exposure estimate in epidemiological studies, as input in hybrid models to improve personal exposure assessment, and for policy evaluation.

Keywords Air pollution · Fine particulate matter · Nitrogen dioxide · Land use regression models · Colombia

Introduction

Air pollution is recognized as one of the leading environmental risk factors for population health (GBD 2019 Risk Factors Collaborators 2020). It is estimated that 99% of the world population is living in places where air pollution levels for fine particulate matter (PM_{2.5}) exceed the current safe guideline level defined by the World Health Organization (WHO), and populations from low- and middle-income countries are exposed to the highest levels (World Health Organization 2021). In 2019, it was estimated that a total of 2.92 million deaths in females and 3.75 million deaths

in males were attributable to ambient particulate matter and ozone air pollution. For Latin America and the Caribbean (LAC) region, and overall for low- and low-middle income countries, air pollution was the second most important risk factor (after malnutrition) that accounted for attributable disability-adjusted life-years (DALYs) rates over the past decade (GBD 2019 Risk Factors Collaborators 2020).

Particulate matter (PM_{2.5}), nitrogen dioxide (NO₂), and ozone (O₃) are the ambient air pollutants most strongly associated with adverse health effects in the short- and long-term (World Health Organization 2021). The health effects from long-term exposure to air pollution are tenfold higher than the short-term effects represented by daily variations (Pope 2007). For long-term exposure there is also evidence that there are large within-city contrasts and their effects are probably higher than the effects related to variations between cities

Responsible Editor: Gerhard Lammel

Extended author information available on the last page of the article

(Crouse et al. 2015). Therefore, high-resolution spatial estimations of long-term exposure to air pollutants, particularly in urban setting, are critical for epidemiological research studying the association between air pollution and health and an important input for air quality management plans aimed to reduce air pollution adverse effects (Fann et al. 2011). There are different methods for estimating intraurban spatial variability of air pollutants. These methods include models based on proximity to monitoring stations, interpolation methods, land use regression models (LUR), and dispersion and chemical transport models combined with satellite remote sensing (Dijkema et al. 2011; Hoek 2017; Hoek et al. 2008; Michael Jerrett et al. 2005; van Donkelaar et al. 2021).

LUR models combined monitoring of air pollutants with the development of stochastic models using physical landscape characteristics, meteorology, and population as predictor variables (Hoek et al. 2008). LUR models use standard multivariable spatial regression techniques that have lower computational requirements compared with dispersion or chemical transport models and are relatively easy to implement using geographic information systems (GIS), which made them a method of preference in developing intraurban surfaces of air pollutant exposure (Hoek et al. 2008). LUR models have shown to have a high predictive value and to be a cost-effective method to estimate intraurban variations of air pollutants in different regions including North America, Europe, and Asia (Allen et al. 2011; Chen et al. 2013; de Hoogh et al. 2016; Eeftens et al. 2012; Gurung et al. 2017; Kashima et al. 2018; Lee et al. 2017; Stafoggia et al. 2022). Recently LUR has been used in these regions as input data for hybrid models combining dispersion models, satellite-based observations, land use, and surface monitoring data for PM_{2.5} and NO₂ (Hoek 2017). Also, annual and monthly global estimates of ground level PM_{2.5} and NO₂ have been developed, combining satellite remote sensing with the GEOS-Chem chemical transport model and calibration using ground-level observations (van Donkelaar et al. 2021). These models provide spatially fine resolutions at 0.01°×0.01° and have shown to have a very good performance in North America and Europe but have very high uncertainty for tropical areas particularly in South America (Hoek 2017; van Donkelaar et al. 2021).

Despite LAC cities are growing rapidly and experiencing high levels of air pollution, the estimates of long-term exposure to air pollution are scarce in the region. In most cities, the ground-level measurements of atmospheric pollutants have poor consistency and coverage (Cunha-Zeri and Ometto 2021). Limitations include that traditional air quality stations require high financial funding in resource-limited countries which make them logistically prohibitive since it is not cost-effective. Consequently, given the limited resources of good air quality data, modeling emerges as a possible tool to derive management measures (Agudelo-Castañeda et al. 2023). However, high-resolution spatial estimations of

long-term exposure to air pollutants are scarce in LAC and development of LUR models for some pollutants have been reported only for the cities of Mexico, Sao Paulo, Quito, and Medellín (Alvarez-Mendoza et al. 2019; Habbermann and Gouveia 2007; Londoño and Cañon 2015; Luminati et al. 2021; Son et al. 2018).

Colombia is located at the extreme north of South America with an estimated population of 52 million inhabitants (Departamento Nacional de Estadística (DANE) 2020b) distributed across 32 departments and 1122 municipalities. The national air quality surveillance network has operated since 1993 and currently includes 22 regional surveillance systems that are distributed in 77 municipalities of 19 departments. In 2021, the national monitoring network included 131 monitoring stations for PM_{2.5} and 57 for NO₂ (Instituto de Hidrología Meteorología y Estudios Ambientales-IDEAM 2022). Data from monitoring stations provide useful information for temporal daily variations of pollutants but provide limited information on the spatial variability of pollution especially in densely populated urban settings that concentrate 77% of the country's population (Departamento Nacional de Estadística (DANE) 2020b). Data from monitoring surveillance systems have been used in epidemiological studies assessing the short-term effects of pollutant concentrations on mortality and morbidity in the largest cities in Colombia (Blanco-Becerra et al. 2014; Rodríguez-Villamizar et al. 2018). However, there is a need for estimations of long-term spatial variation of pollutants within cities. LUR models have provided high performance and less computational requirements compared to other methods for assessing long-term exposures to air pollutants. Therefore, our objective was to develop intraurban LUR models for PM_{2.5} and NO₂ in the five largest cities in Colombia to estimate of long-term population exposure to air pollution for use in air quality health assessment and mitigation.

Methods

Study areas

The study was conducted in the urban areas of the five largest cities in Colombia: Barranquilla, Bucaramanga, Bogotá, Cali, and Medellín (Fig. 1). The population varies across cities, Bogotá being the most populated city with an estimated population of 7,834,167 million inhabitants in 2021. The estimated total population during 2021 was 1,297,082 for Barranquilla; 614,269 for Bucaramanga; 2,264,748 for Cali; and 2,573,220 inhabitants for Medellín (Departamento Nacional de Estadística (DANE) 2020b). The altitude and average temperature also vary across cities, with Barranquilla being the warmer and closest to the sea level and Bogotá being the coldest and highest elevation. The physical

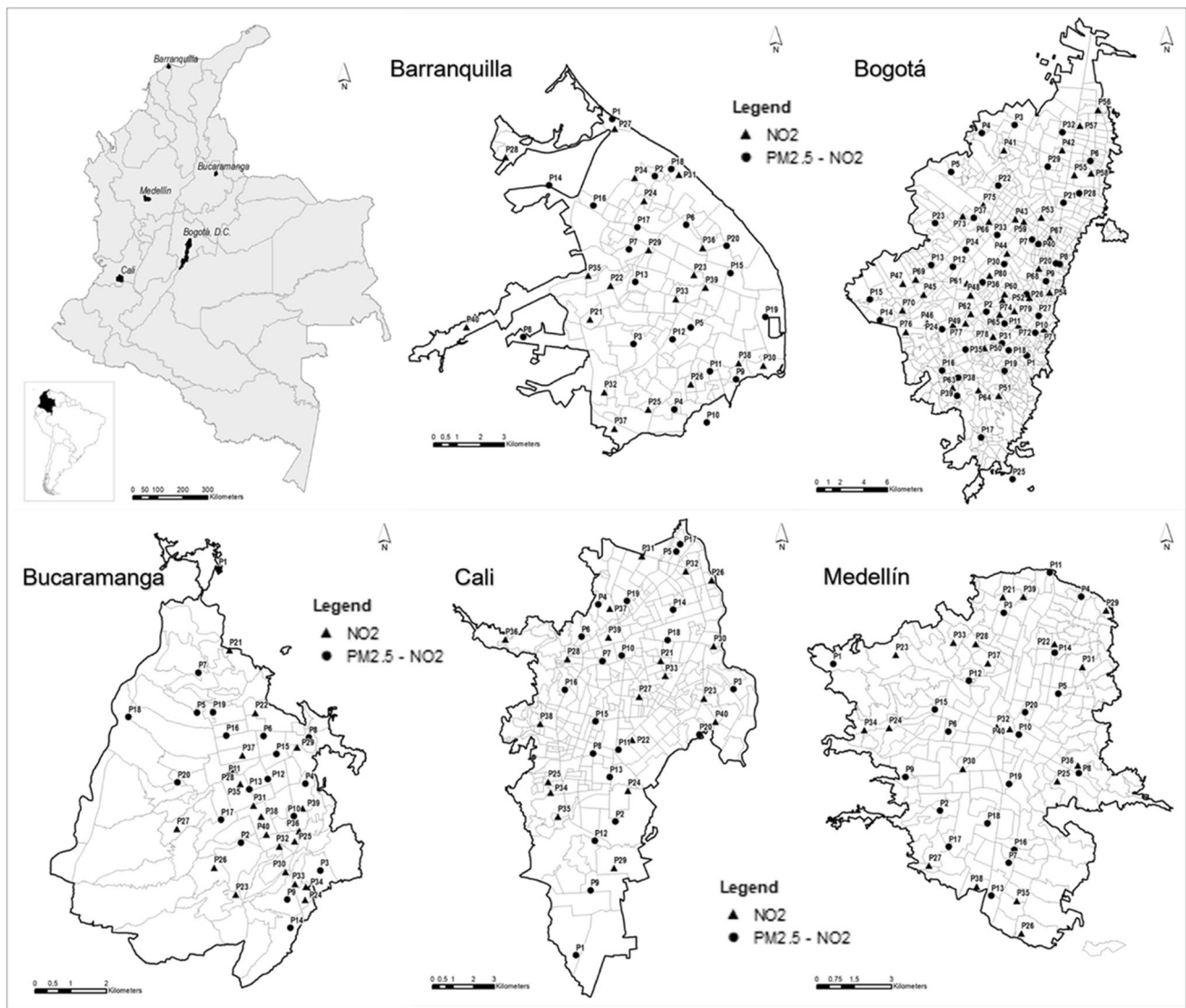


Fig. 1 Study areas and monitoring location within cities in Colombia. Note: Circles represent monitoring sites for both pollutants, $PM_{2.5}$ and NO_2 , and triangles represent monitoring sites for NO_2 only

characteristics of these cities are presented in Table S1 in Supplementary material. Similar to other capital cities in South America, the roadways networks in these cities are complex and dense, and both industrial and residential neighborhoods coexist.

Air pollution measurement data

$PM_{2.5}$ and NO_2 concentrations were measured in the five cities for two consecutive weeks during both the dry and the rainy season in 2021. The selection of the dry and rainy seasons for each city was defined based on the total precipitation registered in local meteorological stations between 2010 and 2019. The driest months correspond to January to March while the months with higher precipitation were

April to May for most cities. The details of the sampling period for each city are presented in Table S1 in Supplementary material.

For NO_2 , there were 80 sampling sites for Bogotá and 40 for the other cities; while for $PM_{2.5}$, there were 40 sampling sites for Bogotá and 20 for the other cities. Figure 1 shows the location of sampling sites distributed across the urban area of the cities. The density of sampling sites in the urban areas for NO_2 measurements (samplers per km^2) was 2.3 for Barranquilla, 0.8 for Bucaramanga, 4.4 for Bogotá, 3.5 for Cali, and 3.6 for Medellín; the density of sampling for $PM_{2.5}$ was twice these values as we used half the number of monitors. The selection of sampling sites was conducted with participation of the study team and experts from the environmental and health departments of each city. The criteria for selecting the

monitoring sites included (1) the representation of traffic, residential, industrial or other areas within the cities, and (2) the heterogeneity in the characteristics of the selected sites (i.e., in terms of types of traffic, density of residential areas or particular areas for cities such as port or industrial areas). The sampling sites included one background urban site per city. The background site was located in the area of the city with the lowest concentrations of pollutants based on measurements, if they were available, or based on the experts' knowledge of pollution within the city. In addition, sampling included 3–4 sites per city that were installed in the same location as monitoring stations from the local air quality network to facilitate instrument intercomparisons. For quality control, two blank filters were used for each city.

Measurement campaigns were simultaneously conducted across all sampling sites in each city for 2 weeks. Two trained teams of field staff were responsible for installing and uninstalling monitoring samplers across the study cities. We measured gravimetric $PM_{2.5}$ using Ultrasonic Personal Aerosol Sampler (UPAS) samplers (V2.0 Access Sensor Technologies, Fort Collins, CO, USA) that were installed between 2.5 and 3 m above ground in all monitoring sites. The UPAS monitors have been widely used for measuring gravimetric $PM_{2.5}$ in similar and higher pollution settings (Arku et al. 2020) and have shown good performance for collecting airborne PM for gravimetric analysis (Leith et al. 2020). We adapted an environmental enclosure to protect the device during outdoor sampling and added an external battery to increase the sampling time to 7 days at 25% duty cycle at a flow rate of 1 lpm. Each monitor was loaded with a 37-mm Teflon filter at the start of each measurement period. We replaced the UPAS and filters at each sampling site after 7 days to complete the 2 weeks monitoring period. Gravimetric analysis was conducted for all cities in a single laboratory certified for this competence (ISO/IEC 17025:1999) by the Instituto de Hidrología, Meteorología y Estudios Ambientales (IDEAM). Each filter and blank were weighted three times, and the average measurement was reported for each filter. The reported limit of quantification was 0.68 μg , and the limit of detection was 1.36 μg . The average $PM_{2.5}$ concentration of the two weekly filters from the same site, and campaign was reported as the site concentration for statistical analysis.

For measuring NO_2 , we used passive diffusion Palmes Tubes (Gradko environmental, Hampshire, UK) that were installed for 2 weeks with a height of 2.5–3 m above ground in all monitoring sites. For quality control, an extra two blank tubes were deployed in each city. The processing of all tubes was conducted in the manufacturers' laboratory, and concentration measurements were reported as the average of duplicate measurements. The reported limit of detection was 0.031 μg of NO_2 in tubes. The installation, operation, and deinstallation of the $PM_{2.5}$ and NO_2 monitoring devices including refrigeration of samples were conducted by trained personnel following the manufacturer's instructions.

GIS predictor variables

Predictor variables were grouped into five categories: (1) land use (areas of different land uses); (2) population (including population counts and population density); (3) roads (including total length of roads and distance from sampling sites to arterial roads); (4) traffic (including estimated average speed and traffic volume); (5) physical geography (altitude); and (6) meteorology (including average temperature, precipitation, relative humidity, and wind direction). All predictor variables were created for circular buffers with radii of 100 m, 200 m, and 500 m and centered at the monitoring sites. These predictor variables were obtained from the intersection between buffers and GIS layers. In total, 78 independent variables were generated including variations of roadways variables. Maps were created using ESRI ArcGIS® 10.8.1 and ArcMap™ under license (ESRI® version, US). Table 1 provides the details of the predictor variables used to generate the LUR models.

Land use data were obtained from the local government's planning office based on the most recent land use distribution available. Altitude was measured in sampling sites directly using an altimeter during the first deployment of monitoring devices. Population data and roads classification were obtained from the demographic and cartographic information of the census 2018 (Departamento Nacional de Estadística (DANE) 2020a). Meteorology data were obtained from meteorological monitoring stations from the local environmental authority including 16 stations in Bogotá, 22 stations in Medellín, and 8 stations in Cali. Precipitation and temperature raster surfaces were calculated using the Regnie model (Rauthe et al. 2013). Briefly, we used data from stations coupled with altitude from the digital terrain model (DTM) with 30 m resolution, the slope and land exposure (the direction or azimuth angle of the inclination of the slope) to calculate spatial precipitation and temperature mean values using a linear regression model. Barranquilla and Bucaramanga had less than four local meteorological stations that did not allow for a valid spatial estimation, and therefore, meteorological data was not included in LUR models for these two cities.

Traffic predictor variables were measured and estimated for the project. The traffic speed measurements were obtained during the same monitoring campaigns periods by using a cloud-based data method that included data pre-processing, speed computation, and output data formatting. During the pre-processing, the street network vector data from Openstreetmap was edited to match the same network used by the Google Maps platform. Then, the network streets were split into 100-m links considering the road intersections setup. Then, the speed was computed for those links using their length and travel time. Travel times at the link level were obtained from the Google Maps platform using the distance

Table 1 Land use regression predictor variables^a

Category	Source	Year	Unit	Variable names
Land use	Land use plan for each city	2014	% of land use type (square meters)	Industrial-IND Residencial-RES Dotacional-DOT Central-CEN Commercial-COM Port-PORT Mixed-MIX
Population	National Census	2018	People per square meter	Total population-POB Population density-DEN
Roads	Open Street Maps	2020	Kilometers	Length by road type Trunk road-TRUNK Primary road-PRIM Secondary road-SEC Tertiary road-TER Local road-LOC Distance from site to road by road type DTRUNK DPRIM DSEC DTER DLOC
Traffic	Speed Distance Matrix API—Google Speed-density-flow functions	2021	Kilometers per hour Vehicles per hour	Traffic speed-VEL Traffic volume-VOL
Physical geography Altitude		2021	Meters above sea level (MASL)	Altitude-ALT
Meteorology	Monitoring Station	2021	Temperature °C Precipitation mm Relative humidity % Wind direction	Temperature TPRM Precipitation PPRM Humidity (%) HR Wind direction WD

^aAll predicted variables were created for buffers of 100 m, 200 m, and 500 m

matrix API service, which provides predicted values at the time the service was used. Finally, the speed of each link was added to its attributes set, and the whole collection of links was used to create a GIS layer using Python scripts.

To estimate traffic volumes, we used speed-density-flow functions, which describe the relationships between traffic speed, density, and flow rate on a road segment. These functions were obtained and used to estimate traffic conditions (National Research Council 2010). We computed speed-density-flow functions for urban traffic for Bogota (73 road segments) and Medellín (199 road segments) using data from sensors and traffic cameras provided by the transportation authorities. We computed and validated the functions for three different traffic regimes: interrupted, semi-interrupted, and uninterrupted flow. We tested six theoretical functional forms (Greenshields, Drew, Pipes, May&Keller, Greenberg, and Underwood Model) (Gaddam and Rao 2019) by using random sampling with replacement. The best model was selected based on the root mean square error (RMSE). The resulting functional forms were then used to estimate traffic volumes in the road network of Barranquilla, Cali, and Bucaramanga,

taking into account the traffic regimes, and the number of lanes in each road segment.

Statistical analysis

We averaged pollutants' concentrations measured during both sampling campaigns to obtain annual means for each city. The comparison of measurements of the PM_{2.5} sampling device with local monitoring stations was conducted for 13 monitoring stations with data available (2 in Barranquilla, 4 in Bogotá, 4 in Cali, and 3 in Medellín). Comparison of concentrations was evaluated using Bland and Altman agreement coefficients and graphs (Bland and Altman 1986). The average annual measurements across the monitoring sites were also compared to the average annual estimation measurements from the real-time local monitoring stations in the cities.

We developed LUR models to estimate intraurban spatial variation of PM_{2.5} and NO₂ within the five cities. We used multivariable spatial regression models that allow local estimations of a dependent variable Z, by implementing the

ordinary least squares (OLS) method, in the presence of possible explanatory variables (Z_j) at the same point (x_i, y_i) represented by the following equation (Londoño, 2018; Maantay and McLafferty 2011):

$$Z(x_i, y_i) = \beta_0 + \sum_{j=1}^n \beta_j Z_j(x_i, y_i) + \varepsilon_j, \varepsilon_j \sim N(0, \sigma^2)$$

To represent the spatial dependency structure between the features being analyzed, the best combination of explanatory variables must be determined. In a first step, we removed highly correlated variables (>0.7) and those variables in which zero values account for more than 90% of the sampling sites. Then, all the predictors are included in the model assessing their statistical significance (p value <0.05) and the sign for their coefficient (β_i) (observing their agreement with the expected theoretical direction of effect). In addition, the selected variables must adequately specify the regression model, by evaluating the specification criteria of the OLS method. We estimated the adjusted R -squared to assess the performance of the models and the variance inflation factor to determine multicollinearity. All models were built with a combination of all the buffer variables (Eeftens et al. 2012; Van Nunen et al. 2017).

We performed a geographically weighted regression (GWR) with the selected equation to examine the spatial heterogeneity of the relationship between air pollutants and other spatial variables and to estimate the multiple regression model parameters. Then, we created a regular point mesh with cells spaced by 200 m over the cities' surface, where the formula obtained by each annual regression model was applied, in order to predict air pollutant levels for each point. Then, a spatial interpolation method (spline) was applied to obtain the concentration surface of the pollutant in the study area. Finally, we performed a leave-one-out cross validation (Eeftens et al. 2012; Wang et al. 2016) for each LUR model in each city and compared the set of predicted values against the observed ones. Then, the cross-validated square error and R^2 were calculated for each model. The cross-validation was conducted using the "loocv" command in Stata® version 13 (Stata Corporation).

Results

Pollutants' concentrations at sampling locations

There were 116 $PM_{2.5}$ sampling sites with valid measurements for both monitoring campaigns used for the estimation of the annual average concentrations. Three sites in Cali, four sites in Bogotá, and one in Medellín were excluded because they contribute only one successful measurement. The mean $PM_{2.5}$ concentrations during the dry season were slightly higher compared to the rainy season (see supplementary material Table S1). The annual $PM_{2.5}$ mean concentration and range in sampling sites

were $16.12 \mu\text{g}/\text{m}^3$ (7.42–22.22) for Medellín, $15.90 \mu\text{g}/\text{m}^3$ (3.64–35.30) for Barranquilla, $15.79 \mu\text{g}/\text{m}^3$ (4.86–32.69) for Cali, $13.89 \mu\text{g}/\text{m}^3$ (4.39–25.52) for Bogotá, and $12.93 \mu\text{g}/\text{m}^3$ (4.90–32.23) for Bucaramanga.

For NO_2 sampling, 17 out of the 240 tubes deployed were removed due to vandalism or invalid measurements, leaving 223 observations for the analyses. The mean NO_2 concentrations during the dry season were slightly higher than those in the rainy season (see supplementary material Table S1). The annual NO_2 mean concentration and range in sampling sites were $49.09 \mu\text{g}/\text{m}^3$ (32.38–68.31) for Medellín, $34.92 \mu\text{g}/\text{m}^3$ (12.56–64.67) for Bucaramanga, $39.12 \mu\text{g}/\text{m}^3$ (13.52–69.89) for Cali, $34.63 \mu\text{g}/\text{m}^3$ (5.09–52.19) for Bogotá, and $24.92 \mu\text{g}/\text{m}^3$ (7.38–51.81) for Barranquilla.

The average of the differences in $PM_{2.5}$ concentrations measured using the UPAS and those reported during the same sampling period by local monitoring stations was $-1.5 \mu\text{g}/\text{m}^3$ (95%CI -6.8 to 3.9) during the dry season campaign (11 monitoring stations) and $-0.05 \mu\text{g}/\text{m}^3$ (95% CI -11.5 to 11.4) during the rainy season campaign (13 monitoring stations). During the dry season campaign, higher differences were observed for two local monitoring stations, one in Medellín and one in Cali. During the rainy season campaign, higher differences were observed for the three local monitoring stations from Medellín. Figure S1 shows the levels of agreement for $PM_{2.5}$ measurements during the two monitoring campaigns. There was only one monitoring station in downtown Medellín with valid NO_2 data for comparison of measurements obtained from Palmes tubes and local monitors. For this site-station pair, the differences was 5.71 and $2.59 \mu\text{g}/\text{m}^3$ during the dry and rainy season, respectively. In Bogotá during the second campaign (rainy season), there were four sites with valid paired measurements whose average difference was $6.70 \mu\text{g}/\text{m}^3$, which was highly influenced by the discrepancy observed in one particular station located at Carrera 7a (excluding this station the average of the difference was $2.86 \mu\text{g}/\text{m}^3$). The comparison of the $PM_{2.5}$ average campaign's measurements from monitoring sites with the average annual measurements from monitoring stations during 2021 resulted in differences of $-0.84 \mu\text{g}/\text{m}^3$ for Bucaramanga, $-1.1 \mu\text{g}/\text{m}^3$ for Medellín, $-1.7 \mu\text{g}/\text{m}^3$ for Bogotá, $1.4 \mu\text{g}/\text{m}^3$ for Cali, and $1.7 \mu\text{g}/\text{m}^3$ for Barranquilla. For NO_2 , the difference between passive samplers and monitoring stations in Bogotá was $5.6 \mu\text{g}/\text{m}^3$.

LUR models

The final LUR models selected for the cities explained higher variability for $PM_{2.5}$ compared with NO_2 (Tables 2 and 3, respectively). The models for $PM_{2.5}$

explained between 44% (Bogotá) and 82% (Medellín) of pollutant’s spatial variability within cities. Most models showed a RMSE of approximately 1.5 $\mu\text{g}/\text{m}^3$ except for Barranquilla where the error was approximately 4 $\mu\text{g}/\text{m}^3$. The contrasts between $\text{PM}_{2.5}$ measured and predicted concentrations at monitoring sites for all cities are presented in Supplementary material Figure S2. Most of the predictor variables included in the $\text{PM}_{2.5}$ LUR models were related to specific types of land uses and roadways’ attributes with predominance of 200 and 500 m buffers. In Bucaramanga, the LUR model only included roadways variables while Medellín was the only city where the model included a meteorological variable (see Table 2). There was no evidence of multicollinearity in the LUR models for both pollutants as the VIF values were all below 2.1. The maps of the predicted concentrations for $\text{PM}_{2.5}$ in the urban areas of the five cities are presented in Fig. 2.

The final selected models for NO_2 explained between 30% (Barranquilla) and 65% (Bucaramanga) of the

pollutant’s spatial variability within cities. Most cities models showed a RMSE around 6 to 8 $\mu\text{g}/\text{m}^3$ except for Cali where the error was close to 1.5 $\mu\text{g}/\text{m}^3$. The measured values versus the predicted values of the models in the monitoring sites for NO_2 in all cities are presented in Supplementary material Figures S3. As expected, most of the predictor variables included in the NO_2 LUR models were a combination of roadways variables with different buffers. In Bucaramanga, the LUR model included population variables and, in Medellín, one meteorological variable (see Table 2). There was no collinearity in the LUR models for both pollutants as the VIF values were all below 1.7. The maps of the predicted concentrations for NO_2 in the urban areas of the five cities are presented in Fig. 3.

Cross validation

Overall, the leave-one-out cross-validation R^2 s showed good stability, particularly for $\text{PM}_{2.5}$. For $\text{PM}_{2.5}$, the

Table 2 Description of developed LUR models for $\text{PM}_{2.5}$ in five cities in Colombia, 2021

City	LUR model	No. sites	Model R^2	RMSE	VIF	R^2 cross validation
Barranquilla	$\text{PM}_{2.5} = 19.83344 - 0.1489524 * \text{ALT} - 0.0230902 * \text{DTRON}500 + 44.43591 * \text{IND}200 + 21.93109 * \text{CEN}500 + 23.10317 * \text{PORT}500$	20	0.73	3.98	1.90	0.54
Bogotá	$\text{Ln}(\text{PM}_{2.5}) = 2.4713 + 3.1439 * \text{DEN}100 + 1.8045 * \text{IND}200 - 0.8418 * \text{RES}500$	40	0.44	1.39	1.63	0.38
Bucaramanga	$\text{Ln}(\text{PM}_{2.5}) = 2.199057 + 0.0014062 * \text{SEC}100 + 0.0000327 * \text{LOC}500 - 0.0012659 * \text{DPRIM}500 + 0.0215501 * \text{VEL}100 - 0.000242 * \text{VOL}200$	20	0.77	1.23	1.78	0.46
Cali	$\text{Ln}(\text{PM}_{2.5}) = 2.3387 + 0.00001 * \text{DOT}200 + 1.0713 * \text{PRIM}200 + 0.5943 * \text{SEC}200 - 0.0004 * \text{VOL}100$	17	0.70	1.28	2.06	0.51
Medellín	$\text{PM}_{2.5} = 13.77207 - 1.357455 * \text{PPROM} - 5.589831 * \text{DOT}100 + 2.269679 * \text{DEN}200 + 70.23039 * \text{MIX}500 + 0.0043842 * \text{VOL}500$	19	0.82	1.71	1.48	0.79

RMSE Root mean square error, *VIF* variance inflation factor, *ALT* altitude, *CEN*, central land use, *DEN* population density; *DOT* Dotacional land use; *DPRIM* distance to primary roadway; *DTRON* distance to trunk roadway; *IND* industrial land use; *LOC* length local roadways; *MIX* mixed land use; *PORT* Port land use; *PPROM* precipitation average; *PRIM* length primary roadways; *RES* residential land use; *SEC* length secondary roadways; *VEL* vehicular speed; *VOL* vehicular volume. Numbers correspond to buffers of 100 m, 200 m, and 500 m

Table 3 Description of developed LUR models NO_2 in five cities in Colombia, 2021

City	LUR model	No. sites	Model R^2	RMSE	VIF	R^2 cross validation
Barranquilla	$\text{NO}_2 = 12.89591 + 25.45936 * \text{PRIM}100 - 0.1583713 * \text{VEL}100 + 0.0061518 * \text{VOL}500$	36	0.30	8.02	1.28	0.19
Bogotá	$\text{Ln}(\text{NO}_2) = 2.8714 + 0.0001 * \text{PRIM}500 + 0.0058 * \text{VEL}100 + 0.2599 * \text{WPROM}$	73	0.40	1.26	1.19	0.34
Bucaramanga	$\text{NO}_2 = 13.00243 + 291.5302 * \text{DEN}100 - 0.0013283 * \text{POB}500 + 0.0025503 * \text{TER}500 + 0.0020514 * \text{LOC}500 + 0.0057464 * \text{VOL}100$	40	0.65	8.08	1.66	0.55
Cali	$\text{Ln}(\text{NO}_2) = 3.47834312 + 0.49126931 * \text{PRIM}200 + 0.39823891 * \text{SEC}200 + 0.36505469 * \text{TER}200 - 0.01475995 * \text{VEL}200$	40	0.44	1.28	1.56	0.36
Medellín	$\text{NO}_2 = 46.06516 - 3.625967 * \text{PPROM} - 0.0299678 * \text{DSEC}200 + 0.0225605 * \text{VOL}500$	34	0.57	5.53	1.06	0.45

RMSE Root mean square error, *VIF* variance inflation factor, *DEN* population density, *DOT* Dotacional land use, *DSEC* distance to secondary roadway; *LOC* length local roadways; *POB* population size; *PPROM* precipitation average; *PRIM* length primary roadways; *SEC* length secondary roadways; *TER* length tertiary roadways; *VEL* vehicular speed; *VOL* vehicular volume, *WPROM* wind speed (mean). Numbers correspond to buffers of 100 m, 200 m, and 500 m

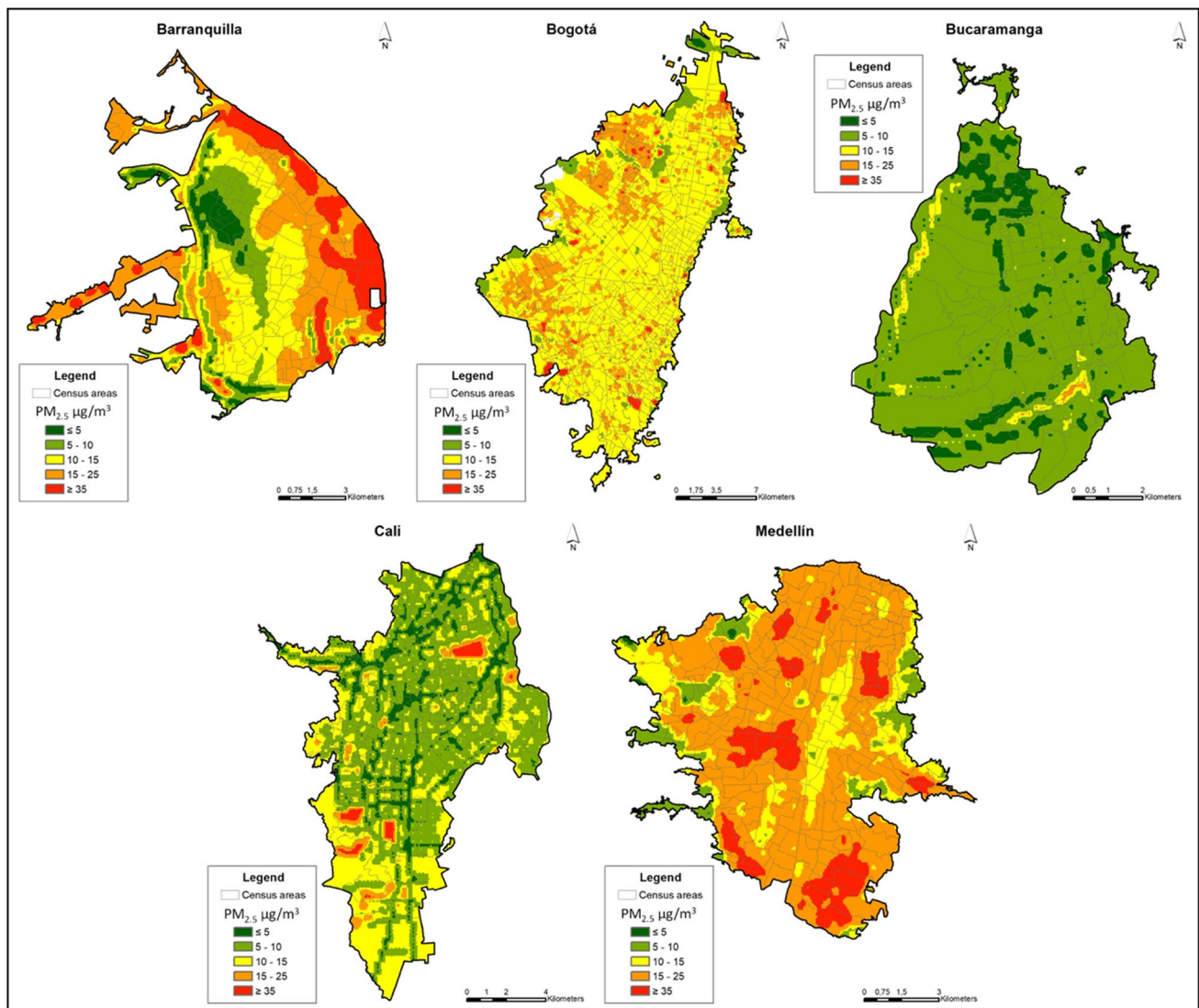


Fig. 2 Annual predicted concentrations for $PM_{2.5}$ in five cities in Colombia, 2021

difference between the model R^2 and the validation R^2 was 19% for Barranquilla, 31% for Bucaramanga, 6% for Bogotá, 19% for Cali, and 3% for Medellín. For NO_2 , the difference between the model R^2 and the validation R^2 was 11% for Barranquilla, 10% for Bucaramanga, 6% for Bogotá, 8% for Cali, and 12% for Medellín. Validation R^2 's are presented in Tables 2 and 3 for $PM_{2.5}$ and NO_2 , respectively.

Discussion

This is the first study to develop LUR models for multiple cities in a Latin American country, providing small-area estimations of air pollutants for use in health risk assessments,

epidemiological studies of long-term exposure to air pollution, and mitigation evaluation. The development of LUR models to estimate concentrations for $PM_{2.5}$ and NO_2 in five of the largest Colombian cities showed moderate to high explained variance, respectively. Generally, the models showed higher explained variance of $PM_{2.5}$ compared with NO_2 . Among the cities, the lowest explained variance was obtained for Bogotá, while the highest was recorded for Medellín and Bucaramanga.

The LUR models for $PM_{2.5}$ showed relatively small errors of the predicted concentrations ($RMSE < 1.7 \mu g/m^3$) in the cities, except for Barranquilla. Moreover, the performance of the LUR models developed for $PM_{2.5}$ was higher than that reported in previous studies in Colombia. Previous LUR models were available only for PM_{10} and $PM_{2.5}$ in the city

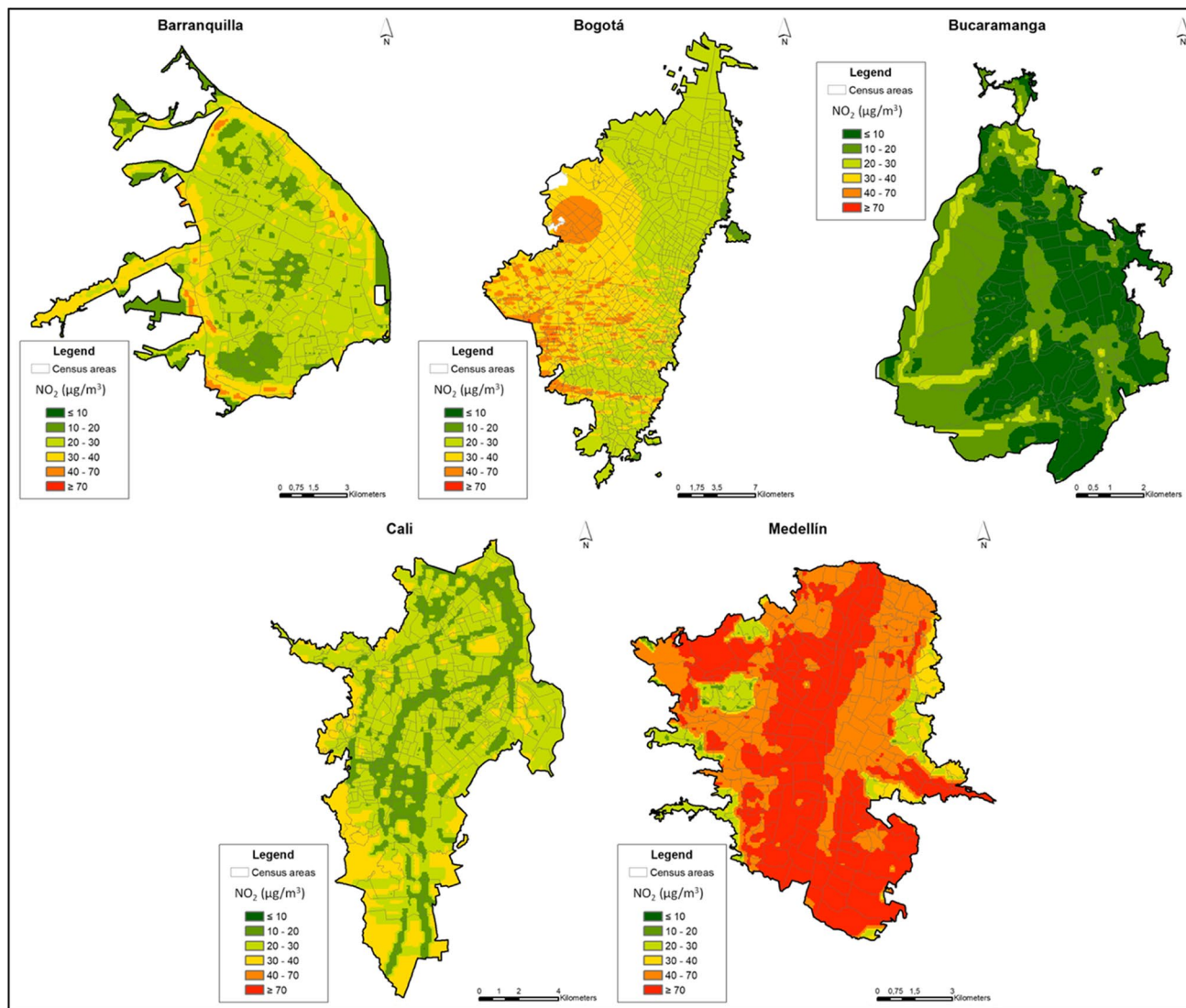


Fig. 3 Annual predicted concentrations for NO₂ in five cities in Colombia, 2021

of Medellín with an explained variability of 79% for PM₁₀ (Londoño and Cañon 2015) and monthly variations between 26 and 79% for PM_{2.5} (Grisales 2020), using data from 2007 and 2018, respectively. Our selected LUR model for PM_{2.5} in Medellín explained 82% of the variability, the highest of the five cities, using a combination of meteorological, land use, population density, and traffic volume variables. The high performance of the LUR models for PM_{2.5} in Medellín compared to other cities might be explained by the wide range of estimated concentrations in the city and the influence of the topography and meteorology in the Valley of Aburrá where Medellín is located, as well as the important contribution of vehicular emissions to local concentrations as have been described in studies of PM_{2.5} characterization in the city (Area Metropolitana del Valle de Aburrá and Politecnico Colombiano Jaime Isaza Cadavid 2021). In contrast, the low

performance of the LUR models for PM_{2.5} in Bogotá compared to other cities might be explained partially by the lower contribution of vehicular emissions and the increased contribution of enriched fugitive dust (resuspension of crustal material and soil dust) and secondary PM (Ramírez et al. 2018). A similar profile has also been documented for Barranquilla with an important contribution of ocean aerosols (Nuñez Blanco 2019), secondary organic aerosols and the effect of exposed land resuspension and road dust (Gómez-Plata et al. 2022), which was represented in the developed LUR model for this city. Additional unexplained variability in PM_{2.5} concentrations in the cities might be related to regional wildfires contributions which have been substantial in northern South America and particularly in Bogotá (Ballesteros-González et al. 2020) (Casallas et al. 2022).

The variation in explained variability reported for the Colombian cities is comparable to that of $PM_{2.5}$ in other Latin American and European countries. In Ecuador, Alvarez et al. (Alvarez-Mendoza et al. 2019) developed LUR models for PM_{10} using remote sensing data, and the models showed an explained variability of 68% at its highest. Sangrador et al. (2008) developed LUR models for $PM_{2.5}$ during the rainy season in 2003 for Mexico City, which showed an explained variability of 60%. Later, Son et al. (2018) developed LUR models for the same city for different temporal scales, and the best explained variability for monthly $PM_{2.5}$ models was 76%. In Europe, the ESCAPE project developed LUR models for $PM_{2.5}$ in 20 study areas, where the explained variability varied from 35% in Manchester, UK, to 89% in Paris, France (Eeftens et al. 2012).

As expected, the best predictor variables in our LUR models for NO_2 were road and traffic variables. However, the performance of the LUR models developed for NO_2 , however, was lower than that for $PM_{2.5}$ and the reported from previous studies in other countries. In Sao Paulo, an annual LUR developed for NO_2 explained 66% of the variability in urban concentrations, with variations for summer (75%) and winter (52%) seasons (Luminati et al. 2021). For the Western European countries, Vienneau et al. (2013) developed LUR models for NO_2 with and without satellite-based NO_2 and obtained explained variability between 48 and 58% without satellite-based NO_2 and a modest additional improvement of 5% when adding satellite-based data. In our models for NO_2 , despite including different variables and metrics of traffic and roads, the models could not capture a higher variability in concentrations, which suggests secondary reactions might be an important source of NO_2 in the cities. Although our NO_2 LUR explained less variability compared to other reported models in cities, the LUR models explain more variability than simple road proximity metrics or interpolation methods based on data from monitoring stations and similar variability than dispersion models, which have been demonstrated in previous studies assessing exposure assessment for epidemiological studies (Allen et al. 2011; de Hoogh et al. 2014; Jerrett et al. 2007).

The LUR models have been used in exposure assessment and health research related to long-term exposure to air pollutants. By incorporating data on local sources of pollution, such as traffic or industrial activity, these models can provide more accurate and precise exposure estimates than traditional monitoring methods (Hoek et al. 2008). This is particularly important for assessing the health effects of chronic exposure to air pollution, which has been linked to a range of adverse health outcomes, including respiratory and cardiovascular disease, cancer, and neurological disorders (Chen et al. 2013; Herting et al. 2019; Knibbs et al. 2018; Lamichhane et al. 2017; Stafoggia et al. 2022). LUR models can also identify areas of high pollution levels and

vulnerable populations, helping to inform policy and intervention strategies to reduce exposure and improve public health (Vienneau et al. 2013).

Alternative methods for estimating surface concentrations of air pollutants have been developed recently using satellite-based models and models using mobile air pollutant measurements. A study conducted at the municipality level in Colombia compared air quality models based on satellite measurements for $PM_{2.5}$ between 2014 and 2019. It showed that the Copernicus Atmospheric Monitoring Service Reanalysis (CAMRA) and the Atmospheric Composition Analysis Group (ACAG) models had a low correlation and tended to overestimated surface concentrations when both models were compared to surface data from 28 cities in 2019. However, ACAG outperformed CAMSRA in terms of mean bias of the model and the spatial representation of the highest concentrations (Rodriguez-Villamizar et al. 2022). Using a mobile monitoring campaign in the city of Bucaramanga in 2019, estimations of within-city spatial variations in ultrafine particle and black carbon concentrations were predicted using a combination of LUR and convolutional neural networks trained using satellite and street-level images, showing the improvement of prediction when using a hybrid approach (Lloyd et al. 2021). Following this hybrid approach, our locally developed LUR models can be further used to develop hybrid models with satellite or mobile data and produce better spatially calibrated models for estimating long-term exposure for $PM_{2.5}$ and NO_2 in the main cities in Colombia and explore their potential transferability across cities.

There are some strengths in our study that are worth mentioning. First, there was a good agreement between $PM_{2.5}$ measurements made with UPAS compared to the concentrations reported by the local monitoring stations in the cities. For NO_2 , there were few monitoring sites to conduct a valid comparison in all cities, but data from local government stations in Bogotá had a good agreement with concentrations reported from measurements with the Palmes tubes. Second, we followed the same standardized procedure for conducting measuring pollutants during the two campaigns in each city and the simultaneous measurement within cities avoid the potential error related to using measures in different time scales. Third, we included basic predictor variables for developing LUR models in the cities (land use, roads, traffic, population, and meteorology) available in the cities in Colombia and might be used further to developed multi-city models as those developed for Europe (Wang et al. 2014).

One limitation of the LUR models developed for the cities is the limited number of sampling sites which was 20 for $PM_{2.5}$ and 40 for NO_2 , except for Bogotá which doubled the number. These numbers are below the lower range of recommended monitoring sites (between 80 and 100) for modeling intraurban variations in complex urban settings using LUR

(Basagaña et al. 2012). As a result, the models developed using many predictors might have resulted in more unstable performance as was observed in the cross-validation. A second limitation of this study is the absence of valid traffic data for the cities during the campaign measurement, which has shown to improve the LUR model performance, particularly for NO₂ (Beelen et al. 2013). To overcome this limitation, we measured traffic speed derived from satellite instruments and used previously available traffic count data for the largest cities to calculate density functions which were then transferred to the other cities to estimate traffic density. Despite the density functions in the cities seemed to reflect the traffic patterns in the cities and were included as significant predictive variables, their inclusion did not help to explain a higher variability in the models for NO₂. Third, we did not include meteorological variables in the development of LUR models for the cities of Bucaramanga and Barranquilla due to limited number of meteorological stations and data to produce a valid estimated surface. Although the models' performance for PM_{2.5} were good particularly for Bucaramanga, including meteorological variables might have increased the models' performance as they have been reported as important predictors for intraurban variations in other countries (Cheewinsiriwat et al. 2022; Olvera Alvaréz et al. 2018). Another limitation of our study is that we did not include local emission sources and regional sources (such as forest fires) in the prediction models. These variables have shown to influence the concentration of particles in the cities (Casallas et al. 2022). Moreover, street NO₂ levels may vary in building density or location, influencing their dispersion. Also, some atmospheric chemical reactions may reduce or transform NO₂ concentrations. In urban areas, NO₂ emitted mostly from traffic within a radius of 100–300 m showed a correlation, although the high reactivity of NO₂ and rapid photodissociation may transform this pollutant in a reduced period (Agudelo-castañeda et al. 2020).

Conclusion

In this study, we developed LUR models to predict PM_{2.5} and NO₂ exposure in five main cities in Colombia. The LUR models showed a large intraurban variability of pollutant concentrations in all cities. The annual models for PM_{2.5} outperformed the models for NO₂ and provided robust models that can be used in epidemiological studies, particularly cohort studies, assessing the effects of long-term air pollution on human health. The newly developed LUR models might be further used to create hybrid models in combination with other data sources to improve personal exposure assessment.

Supplementary Information The online version contains supplementary material available at <https://doi.org/10.1007/s11356-023-31306-w>.

Acknowledgements The authors thank Oscar Jiménez, Hermes Betancur, Jefferson Fernández, Angie Rojas, Paola Barbosa, Kelly Burbano, Ronald Correa, Daniela Ortiz, Martha Mendoza, Wilmer Urango, Luz Obando, and Orlando Guadaña for their contributions during the monitoring field work in the cities.

Author contribution Conceptualization and methodology: LR-V, SM, JC, DA-C, VH, DM, JPJ, LB-C, OR-S, JOV, SW, JB, NR; field work and data collection: LL, OMR, MV, WS, AZO, MC, HS; formal analysis and investigation: LR-V, YR, and SCG; writing—original draft preparation: LR-V, YR, and SCG; writing—review and editing: DA-C, VH, DM, JPJ, LB-C, OR-S, JOV, SW, JB, NR, LL, OMR, MV, WS, AZO, MC, HS; funding acquisition: LR-V, SM, JC, DA-C, VH, DM, JPJ, LB-C, OR-S, JOV, NR.

Funding Open Access funding provided by Colombia Consortium. This research was funded by the Ministry of Science and Technology MINCIENCIAS in Colombia, grant number 905–2019.

Data availability The datasets used and/or analyzed during the current study are available from the corresponding author on reasonable request.

Declarations

Ethics approval and consent to participate Not applicable.

Consent for publication Not applicable.

Competing interests The authors declare no competing interests.

Open Access This article is licensed under a Creative Commons Attribution 4.0 International License, which permits use, sharing, adaptation, distribution and reproduction in any medium or format, as long as you give appropriate credit to the original author(s) and the source, provide a link to the Creative Commons licence, and indicate if changes were made. The images or other third party material in this article are included in the article's Creative Commons licence, unless indicated otherwise in a credit line to the material. If material is not included in the article's Creative Commons licence and your intended use is not permitted by statutory regulation or exceeds the permitted use, you will need to obtain permission directly from the copyright holder. To view a copy of this licence, visit <http://creativecommons.org/licenses/by/4.0/>.

References


- Agudelo-Castañeda D, Arellana J, Morgado-Gamero WB, De Paoli F, Carla Portz L (2023) Linking of built environment inequalities with air quality: a case study. *Trans Res Part D: Trans Environ* 117(1):103668. <https://doi.org/10.1016/j.trd.2023.103668>
- Agudelo-castañeda D, Paoli FD, Morgado-gamero WB, Mendoza M, Parody A, Maturana AY, Teixeira EC (2020) Assessment of the NO₂ distribution and relationship with traffic load in the Caribbean coastal city. *Sci Total Environ* 720:137675. <https://doi.org/10.1016/j.scitotenv.2020.137675>
- Allen RW, Amram O, Wheeler AJ, Brauer M (2011) The transferability of NO and NO₂ land use regression models between cities and pollutants. *Atmos Environ* 45(2):369–378. <https://doi.org/10.1016/j.atmosenv.2010.10.002>

- Alvarez-Mendoza CI, Teodoro AC, Torres N, Vivanco V (2019) Assessment of remote sensing data to model PM10 estimation in cities with a low number of air quality stations: a case of study in Quito, Ecuador. *Environ - MDPI* 6(7):85. <https://doi.org/10.3390/environments6070085>
- Area Metropolitana del Valle de Aburrá A, Politecnico Colombiano Jaime Isaza Cadavid P (2021) Aporte de fuentes y caracterización del PM2.5 en el Valle de Aburrá, Colombia, 2019–2021. Informe final proyecto ARCAL RLA7023-Convenio interadministrativo 671 de 2021. 474 pag. Available in: <https://www.metropol.gov.co/ambiental/calidad-del-aire/Biblioteca-aire/Estudios-calidad-del-aire/Informe-Final-Characterizacion-Fase-IV.pdf>
- Arku RE, Brauer M, Ahmed SH, AlHabib KF, Avezum Á, Bo J, Choudhury T, Dans AM, Gupta R, Iqbal R, Ismail N, Kelishadi R, Khatib R, Koon T, Kumar R, Lanás F, Lear SA, Wei L, Lopez-Jaramillo P, ... Hystad P (2020) Long-term exposure to outdoor and household air pollution and blood pressure in the Prospective Urban and Rural Epidemiological (PURE) study. *Environ Pollut (Barking, Essex : 1987)* 262:114197. <https://doi.org/10.1016/j.envpol.2020.114197>
- Ballesteros-González K, Sullivan AP, Morales-Betancourt R (2020) Estimating the air quality and health impacts of biomass burning in northern South America using a chemical transport model. *Sci Total Environ* 739:139755. <https://doi.org/10.1016/j.scitotenv.2020.139755>
- Basagaña X, Rivera M, Aguilera I, Agis D, Bousa L, Elosua R, Foraster M, de Nazelle A, Nieuwenhuijsen M, Vila J, Künzli N (2012) Effect of the number of measurement sites on land use regression models in estimating local air pollution. *Atmos Environ* 54:634–642. <https://doi.org/10.1016/j.atmosenv.2012.01.064>
- Beelen R, Hoek G, Vienneau D, Eeftens M, Dimakopoulou K, Pedeli X, Tsai MY, Künzli N, Schikowski T, Marcon A, Eriksen KT, Raaschou-Nielsen O, Stephanou E, Patelarou E, Lanki T, Yli-Tuomi T, Declercq C, Falq G, Stempfelet M, ... de Hoogh K (2013) Development of NO2 and NOx land use regression models for estimating air pollution exposure in 36 study areas in Europe – the ESCAPE project. *Atmos Environ* 72:10–23. <https://doi.org/10.1016/j.atmosenv.2013.02.037>
- Blanco-Becerra LC, Miranda-Soberanis V, Hernández-Cadena L, Barrera-Villarreal A, Junger W, Hurtado-Díaz M, Romieu I (2014) Effect of particulate matter less than 10µm (PM10) on mortality in Bogota, Colombia: a time-series analysis, 1998–2006. *Salud Publica Mex* 56(4):363–370. <https://doi.org/10.21149/spm.v56i4.7356>
- Bland JM, Altman DG (1986) Statistical methods for assessing agreement between two methods of clinical measurement. *Lancet (London, England)* 1(8476):307–310
- Casallas A, Castillo-Camacho MP, Guevara-Luna MA, González Y, Sanchez E, Belalcazar LC (2022) Spatio-temporal analysis of PM(2.5) and policies in Northwestern South America. *Sci Total Environ* 852:158504. <https://doi.org/10.1016/j.scitotenv.2022.158504>
- Cheewinsirawat P, Duangyiwa C, Sukitpaneent M, Stettler MEJ (2022) Influence of land use and meteorological factors on PM2.5 and PM10 concentrations in Bangkok, Thailand. *Sustainability (Switzerland)* 14(9). <https://doi.org/10.3390/su14095367>
- Chen H, Goldberg MS, Burnett RT, Jerrett M, Wheeler AJ, Villeneuve PJ (2013) Long-term exposure to traffic-related air pollution and cardiovascular mortality. *Epidemiology* 24(1):35–43. <https://doi.org/10.1097/EDE.0b013e318276c005>
- National Research Council (2010) Highway capacity manual 2010. Transportation Research Board, Washington D.C.
- Crouse DL, Peters PA, Villeneuve PJ, Proux M-O, Shin HH, Goldberg MS, Johnson M, Wheeler AJ, Allen RW, Atari DO, Jerrett M, Brauer M, Brook JR, Cakmak S, Burnett RT (2015) Within- and between-city contrasts in nitrogen dioxide and mortality in 10 Canadian cities; a subset of the Canadian Census Health and Environment Cohort (CanCHEC). *J Exposure Sci Environ Epidemiol* 25(5):482–489. <https://doi.org/10.1038/jes.2014.89>
- Cunha-Zeri G, Ometto J (2021) Nitrogen emissions in Latin America: a conceptual framework of drivers, impacts, and policy responses. *Environ Dev* 38(October 2019):100605. <https://doi.org/10.1016/j.envdev.2020.100605>
- de Hoogh K, Gulliver J, van Donkelaar A, Martin RV, Marshall JD, Bechle MJ, Cesaroni G, Pradas MC, Dedele A, Eeftens M, Forsberg B, Galassi C, Heinrich J, Hoffmann B, Jacquemin B, Katsouyanni K, Korek M, Künzli N, Lindley SJ, ... Hoek G (2016) Development of West-European PM2.5 and NO2 land use regression models incorporating satellite-derived and chemical transport modelling data. *Environ Res* 151:1–10. <https://doi.org/10.1016/j.envres.2016.07.005>
- de Hoogh K, Korek M, Vienneau D, Keuken M, Kukkonen J, Nieuwenhuijsen MJ, Badaloni C, Beelen R, Bolognani A, Cesaroni G, Pradas MC, Cyrus J, Douros J, Eeftens M, Forastiere F, Forsberg B, Fuks K, Gehring U, Gryparis A, ... Bellander T (2014) Comparing land use regression and dispersion modelling to assess residential exposure to ambient air pollution for epidemiological studies. *Environ Int* 73:382–392. <https://doi.org/10.1016/j.envint.2014.08.011>
- Departamento Nacional de Estadística (DANE) (2020a) Geoportal Censo Nacional de Población y Vivienda 2018. <https://geoportal.dane.gov.co/>. Accessed 5 Feb 2021
- Departamento Nacional de Estadística (DANE) (2020b) Proyecciones de Población. <https://www.dane.gov.co/index.php/estadisticas-por-tema/demografia-y-poblacion/proyecciones-de-poblacion>. Accessed 5 Feb 2021
- Dijkema MB, Gehring U, van Strien RT, van der Zee SC, Fischer P, Hoek G, Brunekreef B (2011) A comparison of different approaches to estimate small-scale spatial variation in outdoor NO2 concentrations. *Environ Health Perspect* 119(2):670–675. <https://doi.org/10.1289/ehp.0901818>
- Eeftens M, Beelen R, De Hoogh K, Bellander T, Cesaroni G, Cirach M, Declercq C, Dedele A, Dons E, De Nazelle A, Dimakopoulou K, Eriksen K, Falq G, Fischer P, Galassi C, Gražulevičiene R, Heinrich J, Hoffmann B, Jerrett M, ... Hoek G (2012) Development of land use regression models for PM2.5, PM 2.5 absorbance, PM10 and PMcoarse in 20 European study areas; results of the ESCAPE project. *Environ Sci Technol* 46:11195–11205. <https://doi.org/10.1021/es301948k>
- Fann N, Bell ML, Walker K, Hubbell B (2011) Improving the linkages between air pollution epidemiology and quantitative risk assessment. *Environ Health Perspect* 119(12):1671–1675. <https://doi.org/10.1289/ehp.1103780>
- Gaddam HK, Rao KR (2019) Speed–density functional relationship for heterogeneous traffic data: a statistical and theoretical investigation. *J Mod Trans* 27(1):61–74. <https://doi.org/10.1007/s40534-018-0177-7>
- GBD 2019 Risk Factors Collaborators (2020) Global burden of 87 risk factors in 204 countries and territories, 1990–2019: a systematic analysis for the Global Burden of Disease Study 2019. *Lancet (London, England)* 396(10258):1223–1249. [https://doi.org/10.1016/S0140-6736\(20\)30752-2](https://doi.org/10.1016/S0140-6736(20)30752-2)
- Gómez-Plata L, Agudelo-Castañeda D, Castillo M, Teixeira EC (2022) PM10 source identification: a case of a Coastal City in Colombia. *Aerosol Air Qual Res* 22(10):1–17. <https://doi.org/10.4209/aaqr.210293>
- Grisales S (2020) Modelos de regresión de usos del suelo para la caracterización espacial de la contaminación del aire por PM2.5 en la ciudad de Medellín-Colombia, 2018 [Universidad de Antioquia, Medellín, Colombia]. <https://hdl.handle.net/10495/16376>. Accessed 5 Feb 2020
- Gurung A, Levy JI, Bell ML (2017) Modeling the intraurban variation in nitrogen dioxide in urban areas in Kathmandu Valley,

- Nepal. *Environ Res* 155:42–48. <https://doi.org/10.1016/j.envres.2017.01.038>
- Habbermann M, Gouveia N (2007) Application of land use regression to predict the concentration of inhalable particulate matter in de São Paulo city, Brasil. *Eng Sanit Ambient* 17(2):155–162
- Herting MM, Younan D, Campbell CE, Chen J-C (2019) Outdoor air pollution and brain structure and function from across childhood to young adulthood: a methodological review of brain MRI studies. *Front Public Health* 7:332. <https://doi.org/10.3389/fpubh.2019.00332>
- Hoek G (2017) Methods for assessing long-term exposures to outdoor air pollutants. *Curr Environ Health Rep* 4(4):450–462. <https://doi.org/10.1007/s40572-017-0169-5>
- Hoek G, Beelen R, de Hoogh K, Vienneau D, Gulliver J, Fischer P, Briggs D (2008) A review of land-use regression models to assess spatial variation of outdoor air pollution. *Atmos Environ* 42(33):7561–7578. <https://doi.org/10.1016/j.atmosenv.2008.05.057>
- Instituto de Hidrología Meteorología y Estudios Ambientales-IDEAM (2022) Informe del estado de la calidad del aire en Colombia 2021. Available in: http://www.ideam.gov.co/web/contaminacion-y-calidad-ambiental/informes-del-estado-de-la-calidad-del-aire-en-colombia?p_p_id=110_INSTANCE_3uZc3mUViyRu&p_p_lifecycle=0&p_p_state=normal&p_p_mode=view&p_p_col_id=column-1&p_p_col_count=1&_110_INSTANCE_3uZc3mUViyRu_struts_action=%2Fdocument_library_display%2Fview_file_entry&_110_INSTANCE_3uZc3mUViyRu_fileEntryId=125673668
- Jerrett M, Arain MA, Kanaroglou P, Beckerman B, Crouse D, Gilbert NL, Brook JR, Finkelstein N, Finkelstein MM (2007) Modeling the intraurban variability of ambient traffic pollution in Toronto, Canada. *J Toxicol Environ Health A* 70(3–4):200–212. <https://doi.org/10.1080/15287390600883018>
- Jerrett M, Arain A, Kanaroglou P, Beckerman B (2005) A review and evaluation of intraurban air pollution exposure models. 185–204. <https://doi.org/10.1038/sj.jea.7500388>
- Kashima S, Yorifuji T, Sawada N, Nakaya T, Eboshida A (2018) Comparison of land use regression models for NO₂ based on routine and campaign monitoring data from an urban area of Japan. *Sci Total Environ* 631–632:1029–1037. <https://doi.org/10.1016/j.scitotenv.2018.02.334>
- Knibbs LD, Cortes de Waterman AM, Toelle BG, Guo Y, Denison L, Jalaludin B, Marks GB, Williams GM (2018) The Australian Child Health and Air Pollution Study (ACHAPS): a national population-based cross-sectional study of long-term exposure to outdoor air pollution, asthma, and lung function. *Environ Int* 120:394–403. <https://doi.org/10.1016/j.envint.2018.08.025>
- Lamichhane DK, Kim HC, Choi CM, Shin MH, Shim YM, Leem JH, Ryu JS, Nam HS, Park SM (2017) Lung cancer risk and residential exposure to air pollution: a Korean population-based case-control study. *Yonsei Med J* 58(6):1111–1118. <https://doi.org/10.3349/ymj.2017.58.6.1111>
- Lee M, Brauer M, Wong P, Tang R, Tsui TH, Choi C, Cheng W, Lai P-C, Tian L, Thach T-Q, Allen R, Barratt B (2017) Land use regression modelling of air pollution in high density high rise cities: a case study in Hong Kong. *Sci Total Environ* 592:306–315. <https://doi.org/10.1016/j.scitotenv.2017.03.094>
- Leith D, L'Orange C, Mehaffy J, Volckens J (2020) Design and performance of UPAS inlets for respirable and thoracic mass sampling. *J Occup Environ Hyg* 17(6):274–282. <https://doi.org/10.1080/15459624.2020.1741595>
- Lloyd M, Carter E, Diaz FG, Magara-Gomez KT, Hong KY, Baumgartner J, Herrera GVM, Weichenthal S (2021) Predicting within-city spatial variations in outdoor ultrafine particle and black carbon concentrations in Bucaramanga, Colombia: a hybrid approach using open-source geographic data and digital images. *Environ Sci Technol* 55(18):12483–12492. <https://doi.org/10.1021/acs.est.1c01412>
- Londoño L (2018) Metodología para caracterizar espacio-temporalmente la concentración de material particulado en Valles intramontanos con información escasa [Universidad de Antioquia, Medellín, Colombia]. <https://bibliotecadigital.udea.edu.co/handle/10495/9413>. Accessed 5 Feb 2020
- Londoño L, Cañon J (2015) Metodología para la aplicación de modelos de regresión de usos de suelo en la estimación local de la concentración mensual de PM₁₀ en Medellín, Colombia. *Rev Politécnica* 11(21):29–40
- Luminati O, Ledebur de Antas de Campos B, Flückiger B, Brentani A, Rössli M, Fink G, de Hoogh K (2021) Land use regression modelling of NO₂ in São Paulo, Brazil. *Environ Pollut (Barking, Essex : 1987)* 289:117832. <https://doi.org/10.1016/j.envpol.2021.117832>
- Maantay J, McLafferty S (2011) Geospatial analysis of environmental health. Springer. <https://doi.org/10.1007/978-94-007-0329-2>
- Núñez Blanco Y (2019) Estimación de fuentes de material particulado atmosférico (PM₁₀ y PM_{2.5}) en la ciudad de Barranquilla, Colombia. Universidad de la Costa, Barranquilla, Colombia
- Olvera Alvarez HA, Myers OB, Weigel M, Armijos RX (2018) The value of using seasonality and meteorological variables to model intra-urban PM_{2.5} variation. *Atmos Environ* 182(March):1–8. <https://doi.org/10.1016/j.atmosenv.2018.03.007>
- Pope CA 3rd (2007) Mortality effects of longer term exposures to fine particulate air pollution: review of recent epidemiological evidence. *Inhalation Toxicol* 19(Suppl 1):33–38. <https://doi.org/10.1080/08958370701492961>
- Ramírez O, Sánchez de la Campa AM, Amato F, Catacolí RA, Rojas NY, de la Rosa J (2018) Chemical composition and source apportionment of PM₁₀ at an urban background site in a high-altitude Latin American megacity (Bogotá, Colombia). *Environ Pollut (Barking, Essex : 1987)* 233:142–155. <https://doi.org/10.1016/j.envpol.2017.10.045>
- Rauthe M, Steiner H, Riediger U, Mazurkiewicz A, Gratzki A (2013) A Central European precipitation climatology - Part I: generation and validation of a high-resolution gridded daily data set (HYRAS). *Meteorol Z* 22(3):235–256. <https://doi.org/10.1127/0941-2948/2013/0436>
- Rodríguez-Villamizar LA, Belalcázar-Ceron LC, Castillo MP, Sanchez ER, Herrera V, Agudelo-Castañeda DM (2022) Avoidable mortality due to long-term exposure to PM_{2.5} in Colombia 2014–2019. *Environ Health: Global Access Sci Source* 21(1):137. <https://doi.org/10.1186/s12940-022-00947-8>
- Rodríguez-Villamizar LA, Rojas-Roa NY, Blanco-Becerra LC, Herrera-Galindo VM, Fernández-Niño JA (2018) Short-term effects of air pollution on respiratory and circulatory morbidity in Colombia 2011–2014: a multi-city, time-series analysis. *Int J Environ Res Public Health* 15(8). <https://doi.org/10.3390/ijerph15081610>
- Sangrador JT, Nuñez ME, Villarreal AB, Cadena LH, Jerrett M, Romieu I (2008) A land use regression model for predicting PM_{2.5} in Mexico City. *Epidemiology* 19(S259):1
- Son Y, Osornio-Vargas AR, O'Neill MS, Hystad P, Texcalac-Sangrador JL, Ohman-Strickland P, Meng Q, Schwander S (2018) Land use regression models to assess air pollution exposure in Mexico City using finer spatial and temporal input parameters. *Sci Total Environ* 639:40–48. <https://doi.org/10.1016/j.scitotenv.2018.05.144>
- Stafoggia M, Oftedal B, Chen J, Rodopoulou S, Renzi M, Atkinson RW, Bauwelinck M, Klompaker JO, Mehta A, Vienneau D, Andersen ZJ, Bellander T, Brandt J, Cesaroni G, de Hoogh K, Fecht D, Gulliver J, Hertel O, Hoffmann B, ... Janssen NAH (2022) Long-term exposure to low ambient air pollution concentrations and mortality among 28 million people: results from seven large European cohorts within the ELAPSE project. *Lancet Planetary Health* 6(1):e9–e18. [https://doi.org/10.1016/S2542-5196\(21\)00277-1](https://doi.org/10.1016/S2542-5196(21)00277-1)
- van Donkelaar A, Hammer MS, Bindle L, Brauer M, Brook JR, Garay MJ, Hsu NC, Kalashnikova OV, Kahn RA, Lee C, Levy RC,

- Lyapustin A, Sayer AM, Martin RV (2021) Monthly global estimates of fine particulate matter and their uncertainty. *Environ Sci Technol* 55(22):15287–15300. <https://doi.org/10.1021/acs.est.1c05309>
- Van Nunen E, Vermeulen R, Tsai MY, Probst-Hensch N, Ineichen A, Davey M, Imboden M, Ducret-Stich R, Naccarati A, Raffaele D, Ranzi A, Ivaldi C, Galassi C, Nieuwenhuijsen M, Curto A, Donaire-Gonzalez D, Cirach M, Chatzi L, Kampouri M, ... Hoek G (2017) Land use regression models for ultrafine particles in Six European Areas. *Environ Sci Technol* 51:3336–3345. <https://doi.org/10.1021/acs.est.6b05920>
- Vienneau D, de Hoogh K, Bechle MJ, Beelen R, van Donkelaar A, Martin RV, Millet DB, Hoek G, Marshall JD (2013) Western European land use regression incorporating satellite- and ground-based measurements of NO₂ and PM₁₀. *Environ Sci Technol* 47(23):13555–13564. <https://doi.org/10.1021/es403089q>
- Wang M, Beelen R, Bellander T, Birk M, Cesaroni G, Cirach M, Cyrus J, de Hoogh K, Declercq C, Dimakopoulou K, Eeftens M, Eriksen KT, Forastiere F, Galassi C, Grivas G, Heinrich J, Hoffmann B, Ineichen A, Korek M, ... Brunekreef B (2014) Performance of multi-city land use regression models for nitrogen dioxide and fine particles. *Environ Health Perspect* 122(8):843–849. <https://doi.org/10.1289/ehp.1307271>
- Wang M, Brunekreef B, Gehring U, Szpiro A, Hoek G, Beelen R (2016) A new technique for evaluating land-use regression models and their impact on health effect estimates. *Epidemiology* (Cambridge, Mass) 27(1):51–56. <https://doi.org/10.1097/EDE.0000000000000404>
- World Health Organization (2021) WHO global air quality guidelines: particulate matter (PM_{2.5} and PM₁₀), ozone, nitrogen dioxide, sulfur dioxide and carbon monoxide. World Health Organization. <https://apps.who.int/iris/handle/10665/345329>. Accessed 1 Oct 2021
- Publisher's Note** Springer Nature remains neutral with regard to jurisdictional claims in published maps and institutional affiliations.

Authors and Affiliations

Laura A. Rodríguez-Villamizar¹  · Yurley Rojas² · Sara Grisales³ · Sonia C. Mangones⁴ · Jhon J. Cáceres² · Dayana M. Agudelo-Castañeda⁵ · Víctor Herrera^{1,6} · Diana Marín⁷ · Juan G. Piñeros Jiménez³ · Luis C. Belalcázar-Ceron⁴ · Oscar Alberto Rojas-Sánchez⁸ · Jonathan Ochoa Villegas⁹ · Leandro López¹ · Oscar Mauricio Rojas¹⁰ · María C. Vicini¹¹ · Wilson Salas¹² · Ana Zuleima Orrego¹³ · Margarita Castillo¹⁴ · Hugo Sáenz¹⁵ · Luis Álvaro Hernández¹⁵ · Scott Weichenthal¹⁶ · Jill Baumgartner¹⁶ · Néstor Y. Rojas⁴

✉ Laura A. Rodríguez-Villamizar
laurovi@uis.edu.co

Yurley Rojas
yurleyrg18@gmail.com

Sara Grisales
sara.grisales@udea.edu.co

Sonia C. Mangones
scmangonesm@unal.edu.co

Jhon J. Cáceres
jcaceres@uis.edu.co

Dayana M. Agudelo-Castañeda
mdagudelo@uninorte.edu.co

Víctor Herrera
vicmaher@uis.edu.co

Diana Marín
dianamarcela.marin@upb.edu.co

Juan G. Piñeros Jiménez
juan.pineros@udea.edu.co

Luis C. Belalcázar-Ceron
lcbelalcazarc@unal.edu.co

Oscar Alberto Rojas-Sánchez
orojas@ins.gov.co

Jonathan Ochoa Villegas
jonathan.ochoa@usbmed.edu.co

Oscar Mauricio Rojas
oscar.rojas@amb.gov.co

María C. Vicini
maria.vicini@cdmb.gov.co

Wilson Salas
calidadairedagma@cali.gov.co

Ana Zuleima Orrego
ana.orrego@metropol.gov.co

Margarita Castillo
margarita.castillo@barranquillaverde.gov.co

Hugo Sáenz
hugo.saenz@ambientebogota.gov.co

Luis Álvaro Hernández
alvaro.hernandez@ambientebogota.gov.co;
lhernandezgo@unal.edu.co

Scott Weichenthal
scottandrew.weichenthal@mccgill.ca

Jill Baumgartner
jill.baumgartner@mccgill.ca

Néstor Y. Rojas
nyrojasr@unal.edu.co

¹ Departamento de Salud Pública, Universidad Industrial de Santander, Carrera 32 29-31, Bucaramanga, Colombia

² Escuela de Ingeniería Civil, Industrial de Santander, Carrera 27 Calle 9 Ciudad Universitaria, Bucaramanga, Colombia

³ Facultad Nacional de Salud Pública, Universidad de Antioquia, Calle 62 52-59, Medellín, Colombia

- ⁴ Facultad de Ingeniería, Universidad Nacional de Colombia, Carrera 45 26-85 Edificio 401, Bogotá, Colombia
- ⁵ Departamento de Ingeniería Civil y Ambiental, Universidad del Norte, Km 5 Vía Puerto Colombia, Barranquilla, Colombia
- ⁶ Facultad de Ciencias de La Salud, Universidad Autónoma de Bucaramanga, Calle 157 15-55 El Bosque, Floridablanca, Colombia
- ⁷ Escuela de Medicina, Universidad Pontificia Bolivariana, Calle 78B 72^a-159, Medellín, Colombia
- ⁸ División de Investigación en Salud Pública, Instituto Nacional de Salud, Avenida Calle 26 51-20, Bogotá, Colombia
- ⁹ Facultad de Ingenierías, Universidad San Buenaventura, Carrera 56C 51-110, Medellín, Colombia
- ¹⁰ Área Metropolitana de Bucaramanga, Calle 89 Transveral Oriental Metropolitana, Bucaramanga, Colombia
- ¹¹ Corporación Para La Defensa de La Meseta de Bucaramanga, Carrera 23 37-63, Bucaramanga, Colombia
- ¹² Departamento Administrativo de Gestión del Medio Ambiente, Alcaldía de Santiago de Cali, Avenida 5AN 20-08, Cali, Colombia
- ¹³ Área Metropolitana del Valle de Aburrá, Carrera 53 40^a-31, Medellín, Colombia
- ¹⁴ EPA Barranquilla Verde, Carrera 60 72-19, Barranquilla, Colombia
- ¹⁵ Secretaría Distrital de Ambiente, Alcaldía de Bogotá, Avenida Caracas 54-38, Bogotá, Colombia
- ¹⁶ Department of Epidemiology, Biostatistics & Occupational Health, McGill University, 2001 McGill College Avenue, Montreal, Canada